



COOLAH
CENTRAL SCHOOL

Heart of the community ... Key to the world

Newsletter *Monday, 21st May 2018*
Week 4A Term 2

Phone 02 6377 1101
Fax 02 6377 1004

Email: coolah-c.school@det.nsw.edu.au

Website: www.coolah-c.schools.nsw.edu.au

Cross Country/Colour Run



Cross Country 2018 Results
Cunningham 127
Liverpool 139
Warung 157



NAPLAN

NAPLAN has moved online in 2018 for Coolah Central School. NAPLAN started last week and will be completed early this week. In May of every year, students in Years 3, 5, 7 and 9 take part in the National Assessment Program – Literacy and Numeracy (NAPLAN). NAPLAN was first introduced in 2008 and has become a routine part of the school calendar in Australia.

NAPLAN, which is a part of the National Assessment Program (NAP), is how governments, education authorities and schools can determine whether young Australians are reaching important educational goals. Moving NAPLAN online brings many new opportunities for students and teachers that are limited or not possible with paper-based tests.

Some of the main benefits of students taking part in NAPLAN Online include:

Better assessment – and more precise results. NAPLAN Online uses a tailored test or

adaptive design, where the test automatically adapts to a student's performance and asks questions that match the student achievement level, allowing the student to demonstrate their knowledge. This provides teachers and schools with more targeted and detailed information on students' performance on the tests. Tailored testing also provides an opportunity to broaden the scope of the assessments.

Faster turnaround of results. Delivery of assessments online significantly reduces the time it takes to provide feedback to schools, students and parents, so teachers can respond more quickly to learning needs.

More engaging. ACARA research into online assessment has shown that students have engaged well with electronic tests.

As technology develops, ACARA aims to further refine the delivery of the tests to best use the available technology to provide increasingly sophisticated assessments and valuable feedback to teachers, parents and education authorities.

Deputy News with Mr Hughes



Welcome to Week 4A.

This term is busy with many sporting activities and other excursions. I spoke with students last week reminding them of their responsibilities in regards to being able to represent the school in non-curriculum based excursions. Secondary students who have not submitted assessment tasks will not be allowed to represent the school until tasks have been completed. Teachers are available to support students in completing unfinished work at selected lunchtimes. Similarly students who do not meet acceptable standards of behaviour and are working on Student Behavioural Support Programs will not be able to represent the school until they have successfully completed support programs and exclusion periods have been served. I am more than happy to discuss Coolah Central Schools Welfare and Discipline Procedures with any parent or caregiver that would like to arrange a meeting.

I'd like to remind parents and caregivers that we will be adhering to deadlines for notes and payments for

excursions and other activities. This allows for the timely organisation and administration of these events so they run efficiently. Students who do not meet deadlines will not be allowed to attend these excursions or activities.

As the weather gets cooler it's important to ensure that all students have the correct uniform. Coolah Central School Jumpers are available from the front office. They are \$40 each.

Vocal group practice continues this week for all interested students on Monday and Thursday lunchtimes in the music room.

As always I can be contacted at the school should you have any concerns.

Over the next two weeks families will be receiving a Statement of Accounts. These statements include school fees, uniforms and excursions.

If you are experiencing financial difficulties, please contact the Principal to discuss payment options.



SECONDARY SCHOOL ASSESSMENT/ASSIGNMENTS

Year 7	♦ Literacy and Numeracy Revision
Year 8	♦ English- 'Parvana' Essay
Year 9	♦ Literacy and Numeracy Revision ♦ Stage 5.1/5.2 Maths Assignment due 8th June
Year 10	♦ Literacy and Numeracy Revision ♦ Stage 5.1/5.2 Maths Assignment due 8th June
Year 11	♦ Advanced English - Weekly Journal Task ♦ Geography - Senior Geography Project ♦ Major Project and Folio Due 31st August
Year 12	♦ Geography - Essay Plan/Draft Weekly ♦ Advanced English - complete readings on context for Metropolis. ♦ IT Metals Project & Folio Due 16th August
Can parents and guardians please check students diaries as there may be additional homework or teacher correspondence	

Secondary Homework Centre will be operating in the Secondary Computer Room from 1.30pm —2.00pm on Tuesdays and Wednesdays. Students will have access to computers and teacher support to assist with homework and assessment tasks.

CCS Calendar of Events - Week 4

May 20-22	• Yr 11 Biology & Geography Woolgoolga
May 21	• Pri NW Touch
May 23	• Pri S Zone Rugby Union • Whole School Brekky
May 24	• 9/10 TAFE • Merriwa Farm Safety Day Yrs 10 –12 • Agriculture & Primary Industries
May 25	• 9/10 Gulgong Bush Poetry • Pri Zone X Country • Yr 11 Standard English • Shoenhorn Sonata

CCS Calendar of Events - Week 5

May 28	• Yr 10 & 11 Immunisation • Pri Zone Netball • Pri Zone Softball
May 29	• ICAS Science • Yr 12 Biology Kickstart
May 30	• Yr 10 & Under Touch • North West Bowls
May 31	• Opens Touch
June 1	• Primary North West Rugby Union • 9/10 TAFE

**HELPERS FOR PRIMARY
ZONE CROSS COUNTRY**

THIS FRIDAY, 25TH MAY

**PLEASE PHONE THE FRONT
OFFICE ON 6377 1101 IF YOU
CAN SIT ON A CHECK POINT
10.00AM TO 1.30PM**



K-6 News

Thank you to everyone who supported our Cross Country and Colour Run last Thursday. It was a sensational day all round and the colours were amazing.

NAPLAN wrapped up last Friday and we'd like to congratulate all of the Year 3's and 5's who handled the new format with ease.

Mrs Wesley will be on leave this week and will be replaced by Mrs Currell.

Monday 21st - NW Touch Football.

Wednesday 23rd - Whole School Big Breakfast in the Secondary Quad at 9am.
- Southern Zone Rugby Union.

Friday 25th - Zone Cross Country here in Coolah. Volunteers are still needed to attend check points and help out in the canteen. Please contact the front office if you are able to help.

Monday 28th- Zone Netball and softball will be held in Coolah. Netball notes went home last week and softball selections will be held this week with Mrs McMaster.

Homework and Assignments Due		
Kindergarten/ Year 1	Unit 14 Home Readers Sight/ words/Spelling Words	Due Friday Daily practising of home readers and sight words/Spelling words.
Year 1/2	Unit 14 Home Readers Spelling Words	Due Friday Read each book twice—the second time you should hear an improve- ment in fluency and expression. Daily - 'e (these) , ee (meet) , ea (meat) y (baby)'
Year 2/3	Yr. 2 - Unit 13 / Yr. 3 - Unit 12 Spelling words 15 minutes of readings.	Due Friday 'ee'(bee), 'e'(me), 'ea'(seat), 'y'(baby), 'ey' (money) Daily - Please remember your reading logs
Year 3/4	Unit 14 Spelling words 15 minutes of readings.	Due Friday Daily- 'ee,e,ea,y,ey Daily
Year 5	Unit 14 Spelling words 15 minutes of readings.	Due Friday Daily-'ee,e,ea,y,ey Daily-
Year 5/6	Unit 14 Spelling words 20 minutes of readings.	Due Friday Daily - 'ee,e,ea,y,ey' Daily
Learning and Support	Unit 14 Sight and Spelling words 15 minutes of readings.	Due Friday Daily- 'ee,e,ea,y,ey Daily





NSW PREMIER'S SPORTING CHALLENGE STARTS WEEK 5

The NSW Premier's Sporting Challenge encourages students and staff over a 10 week period to participate in a broad range of sports and recreational pursuits to develop their understanding of the importance of sport and physical activity.

During the 10 week Challenge students and staff record their physical activity each day. Any daily physical activity which is moderate to vigorous in intensity can be accrued.

Award levels for the Challenge reflect a daily activity time commitment. Activities may include time spent in a broad range of sports during lunchtime, in school sport programs, class time, before or after school and on weekends.

At the conclusion of the Challenge each student will receive a certificate based on their classes overall effort.

Australian Physical Activity and Sedentary Behaviour Guidelines

Students aged 5-18 years should accumulate at least 60 minutes of moderate to vigorous intensity physical activity every day. In the Challenge, that equates to a **GOLD** Award.



Award	Daily Activity Time
Bronze	30 minutes per day
Silver	45 minutes per day
Gold	60 minutes per day
Diamond	80 minutes per day





Canteen Volunteers Needed Urgently

A **BIG THANK YOU** to those parents who have volunteered their time in the School P&C canteen this term. Unfortunately though we are still very low on volunteer numbers. The Coolah Central School canteen relies on the efforts of volunteers to ensure its continued operation.

Please consider adding your name to the roster for this Term.

If you are available to help out, we would love to add you to our list.

For more information or to volunteer contact: Coolah Central School P & C

Monday 14th May	Tuesday 15th May	Wednesday 16th May	Thursday 17th May	Friday 18th May
Monday 21st May	Tuesday 22nd May	Wednesday 23rd May	Thursday 24th May	Friday 25th May
Monday 28th May	Tuesday 29th May	Wednesday 30th May	Thursday 31st May	Friday 1st June
Monday 4th June	Tuesday 5th June	Wednesday 6th June	Thursday 7th June	Friday 8th June
Monday 11th June Long Weekend	Tuesday 12th June	Wednesday 13th June	Thursday 14th June	Friday 15th June
Monday 18th June	Tuesday 19th June	Wednesday 20th June	Thursday 21st June	Friday 22nd June
Monday 25th June	Tuesday 26th June	Wednesday 27th June	Thursday 28th June	Friday 29th June
Monday 2nd July	Tuesday 3rd July	Wednesday 4th July	Thursday 5th July	Friday 6th July





Coolah Central School

School Canteen Menu

Term 2 & 3

Sandwiches/Rolls/Wraps/Bowls

(Sandwich \$4.50, Wrap \$4.50)

Chicken, Lettuce, Beetroot, Carrot, Tomato, Cheese Cucumber & Mayo	
Ham, Lettuce, Beetroot, Carrot, Tomato, Cheese Cucumber & Mayo	
Salad – Lettuce, Beetroot, Carrot, Tomato, Cheese Cucumber & Mayo	
Chicken Tender Wrap Cheese & Lettuce	
Salad Bowl - Lettuce, Beetroot, Carrot, Tomato, Cucumber, Cheese, Egg	\$5.50
Small Salad Cup - Lettuce, Beetroot, Carrot, Tomato, Cucumber, Cheese	\$2.00
Meat/Salad Bowl - Lettuce, Beetroot, Egg Carrot, Tomato, Cucumber, Cheese	\$6.00
Egg Lettuce Sandwich	\$3.50
Ham/Chicken/Corn Beef	\$3.00
Turkey Cheese Avocado	\$3.00
Egg	\$3.00
Vegemite	\$2.00
Cheese/Tomato	\$3.00
(Extra fillings \$.30c) (Dressing \$.50c) (Toasted)	

Hot Foods

Chicken Wedges (2 per serve)	\$1.50
Chicken Tenders/Sweet Chilli	\$2.00
Pies	\$3.50
Mini Pies	\$2.00
Sausage Rolls	\$3.00
Beef Lasagne	\$5.00
Soup of the Day (Mon, Wed, Fri) (Served with Bread Roll)	\$4.00
(Chicken/Plain Salt free) (Sauce \$.30c)	

Lunch Special -\$6.00 - Every Thursday

Keep an eye out in the school's newsletter every
Monday for the details

Drinks

Milkshake	med	\$2.00
	lge	\$3.00
Flavoured Milk	sml	\$2.00
	lge	\$3.50
Fruit Juice	sml	\$2.00
	lge	\$3.50
Slush Puppie		\$2.00
Water		\$2.00
Cans		\$2.50
Poppers		\$1.50
Hot Chocolate		\$2.00



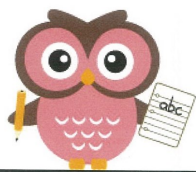
Snacks

Pikelets (Freshly made, 2 per serve) (Toppings extra \$1.00)	\$1.00
Potato Chips/JJ'S Chicken	\$1.50
Muffins (Freshly made)	\$2.00
Fruit Salad Bowl	\$4.00
Small Fruit Salad Cup	\$2.00
Frozen Yoghurt	\$2.00
Calippo	\$1.00
Paddlepops	\$1.50
Paddlepop Twists	\$1.00
Yoghurt Frogs	.20c
Ovaltines	\$1.00
Popcorn	.50c

We offer homemade, tasty, nutritious meals and snacks in accordance with NSW Healthy Schools Canteen Strategy 2017. Recipes, suppliers and methods are available on request. All feedback and suggestions are welcome. Come and see us or email coolahcentralschoolpandc@gmail.com



Canteen Weekly Specials



Tuesday

Quiche
&
Salad

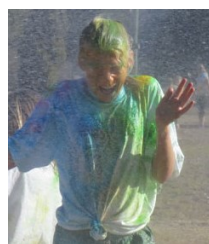
**LUNCH
SPECIAL**

\$6



Thursday

Beef
Stroganoff



Congratulations!

Secondary PBL Raffle Winners

Celena Yr 8 - HSIE
Kaitlyn Yr 8 - HSIE
Sophie Yr 8 - HSIE
Logan Yr 8 - HSIE

Students receive a \$5.00 voucher to spend at the
School Canteen.



PH: 02 6377 1101

Fax: 02 6377 1004

Email: coolah-c.school@det.nsw.edu.au

Colour Explosion & Cross Country Run

Thanks to all for a great day on Thursday for our Annual Cross Country. Once again this year we finalised our day with an EXPLOSION of colour! This was aided with a little bit of water from our Queensborough Bush Fire Brigade (Thanks Rod & Glen).

I don't think there were any uncoloured students by the end of it! Check out the photos in this newsletter.

The Cross Country event saw the following results for the houses:

Cunningham 127—3rd
Liverpool 139—2nd
Warung 157—1st

Congratulations to Warung, just to let you know our overall points for the houses, which includes swimming and cross country, are as follows -

Cunningham—630
Liverpool—622
Warung—629

It looks like the Athletics Carnival in a few weeks will be the decider!

Well done to all our place getters on Thursday. Good luck to the primary students who run at Zone this Friday.

Secondary students will be notified shortly as to whether they have made the Regional Cross Country .

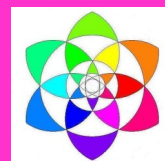
Remember that the Colour Explosion was a fundraiser for the school and all monies need to be in to the front office by this **THURSDAY 24TH MAY**. It would be great if ever student had even a small amount to contribute.

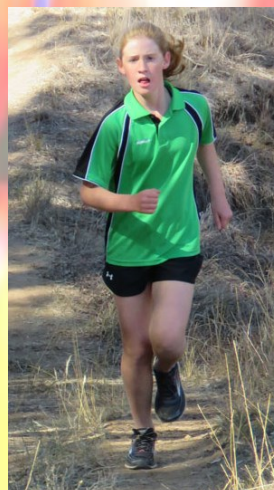
Regional Cross Country

This event is fast approaching, Friday 15th June and we are going to need some helpers to ensure the day runs smoothly and Coolah maintains the great name we have forged by hosting this carnival.

If you are able to help out by sitting on a checkpoint, or working in the canteen/coffee van, please ring the front office on 63771101 as soon as possible and thank you for your assistance.

**ALL COLOUR RUN MONIES
RAISED NEED TO BE RETURNED
TO FRONT OFFICE BY
THIS THURSDAY!**





PH: 02 6377 1101

Fax: 02 6377 1004

Email: coolah-c.school@det.nsw.edu.au